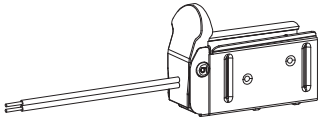
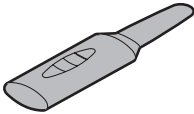


FXN 1129 | FLEXIBLE NEON
SWIVEL FRONT CONNECTOR

Components



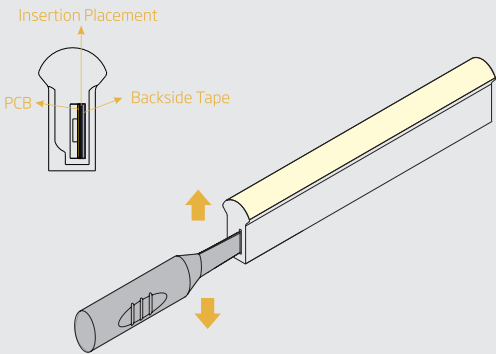
Feed Connector (1pc)
[U Steel Plate (1pc)]



Inducer

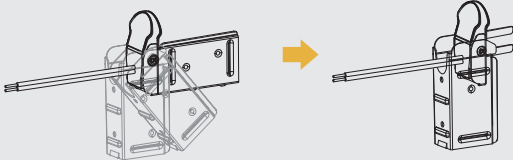
Installation Instructions

Step 1



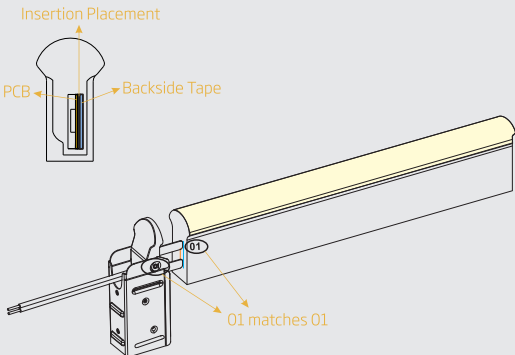
Insert the inducer into the BACKSIDE of PCB and move up and down gently to create a small cavity.

Step 2



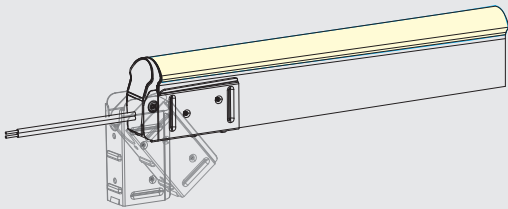
Rotate the U steel plate downwards to make the pins of feed connector exposed completely.

Step 3



Insert the pins of feed connector into the space the inducer created (backside of PCB).

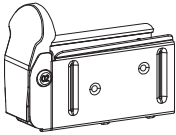
Step 4



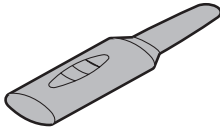
Rotate back till the light seats into the steel plate tightly.

FXN 1129 | FLEXIBLE NEON
SWIVEL END CAP

Components



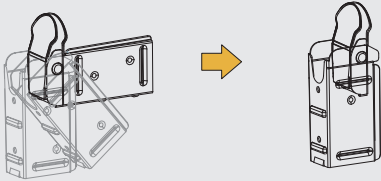
Tail Plug (1pc)
[U Steel Plate (1pc)]



Inducer

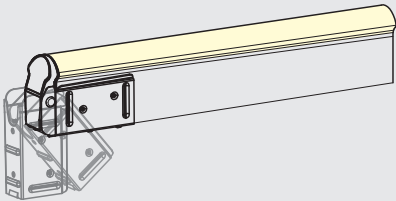
Installation Instructions

➤ Step 1



Rotate the U steel plate downwards.

➤ Step 2



Put the light end and end cap together and rotate it to seat into the steel plate horizontally. Slide the light to the end cap and make sure they are attached tightly.